

Respirex International Limited

Unit F, Kingsfield Business Centre,
Philanthropic Road,
Redhill,
RH1 4DP,
UK.

It is certified that the manufacturer's technical file and the PPE product detailed on page 2 have been assessed and found to be in accordance with

Regulation (EU) 2016/425

Module B, EU type-examination

This certificate is valid from 28 January 2019 until 28 January 2024
Issue 1. Certified since 19th December 2018



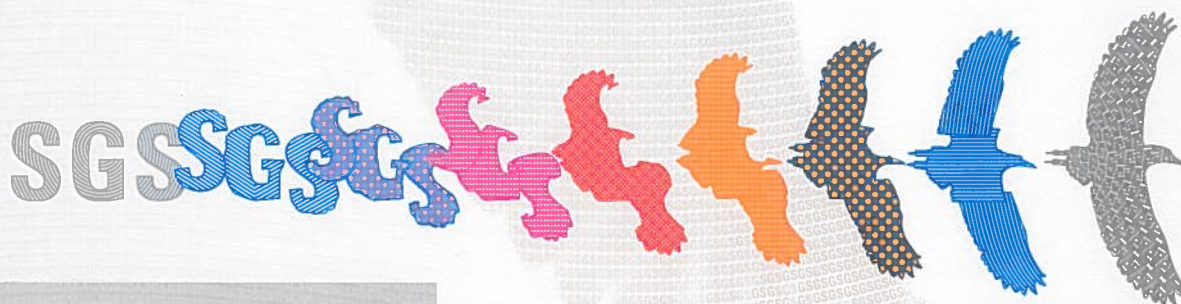
Authorised by

SGS United Kingdom Limited, Notified Body 0120

Unit 202B Worle Parkway, Weston-super-Mare, BS22 6WA UK
t +44 (0)1934 522917 f +44 (0)1934 522137 www.sgs.com

SGS CE 03 1210

Page 1 of 3



Respirex International Limited

Regulation (EU) 2016/425

Module B, EU type-examination

Issue 1

PPE Product

Reusable chemical protective trousers model BTRS with adjustable webbing shoulder braces with quick release buckles. The trousers are constructed with liquid-tight seams and are available in seven different materials and with a variety of leg termination options. Refer to Annex 1 for available sizes, materials and leg termination options.

It is certified that the manufacturer's technical file and the above mentioned PPE have been assessed and found to meet the applicable Essential Health and Safety Requirements in Annex II of Regulation (EU) 2016/425 Personal Protective Equipment

The following have been applied:

EN 14605:2005 + A1:2009 (Type PB [3] & Type PB [4]: Reusable, partial body protective clothing against liquid chemicals with liquid-tight connections)

&

EN 14605:2005 + A1:2009 (Type [3] & Type [4]: Reusable, full body protective clothing against liquid chemicals with liquid-tight & spray-tight connections), when worn in accordance with the user instructions with the corresponding Category III CE Certified Respirex reusable jacket, model JKT.

This certificate is issued on the strict condition that appropriate checks on manufactured PPE, as detailed in Article 19 (c) of the Regulation are implemented and maintained while the model is in production

Certification is based on technical file references: TF002 Issue D & TF103 Issue B.

SGS Reference Number UK/CRS 237657.

¹ The validity of this certificate may have to be reviewed in the light of new or amended harmonised standards

This certificate remains the property of SGS United Kingdom Ltd to whom it must be returned on request.



Respirex International Limited

Regulation (EU) 2016/425

Module B, EU type-examination

Issue 1

Annex 1

Reusable chemical protective trouser model BTRS with liquid tight seams is available in five nominal sizes and with the following material and leg termination options:

Materials

Viton/Butyl/Viton (Respirex part no. A00003)
 Yellow double-sided neoprene (Respirex part no. A00017)
 Fluorescent red neoprene (Respirex part no. A00019)
 Yellow single-sided neoprene (Respirex part no. A00021)
 Yellow PVC-coated polyester (Respirex part no. A00037)
 Green PVC-coated polyester (Respirex part no. A00038)
 Heavy-duty bromobutyl (Respirex part no. A00092)

Leg Termination Options

| | |
|-----|---|
| L01 | Elasticated ankle |
| L02 | Elasticated ankle with stirrup |
| L03 | Elasticated ankle with elasticated outer leg |
| L04 | Elasticated ankle with elasticated outer leg & stirrup |
| L05 | Elasticated ankle with plain outer leg |
| L06 | Elasticated ankle with plain outer leg & stirrup |
| L07 | Integral sock boot |
| L08 | Integral sock boot with elasticated outer leg |
| L09 | Integral sock boot with plain outer leg |
| L12 | Plain ankle |
| L13 | Plain/open ankle with hook & loop securing strap |
| L14 | Elasticated ankle with stirrup & plain outer leg with hook & loop securing strap |
| L16 | Plain/open ankle with plain outer leg |
| L20 | Elasticated ankle with stirrup & plain outer leg with press studs |
| L21 | Elasticated ankle with stirrup & plain outer leg with hook & loop securing tabs |
| L22 | Plain/open ankle with hook & loop securing tabs |
| L23 | Plain/open ankle with press studs |
| L26 | Plain/open ankle with stirrup and plain outer leg with press studs |
| L27 | Plain/open ankle with 46cm side zipper with rear closing outer flap with hook & loop closure. |

Part no example: BTRS**L** . Where **** is the material part no. & the leg termination option no.

